



CUSTOMER PROFILE

EIS selected as strategic partner to enable esure's digital transformation journey



Founded in 2000, esure Group is one of the UK's leading personal lines insurers. The Group provides motor and home insurance products through the prominent esure and Sheilas' Wheels brands, and currently has a total of more than 2.4 million policyholders. The Group is dedicated to building worldclass insurance fundamentals across pricing, underwriting, claims and customer service underpinned by data and analytics – the DNA of insurance. Looking forward, esure Group is progressing its digital transformation program to become a world-class digital insurer, focused on the development of a new technology platform, its customer propositions and data assets.



POLICYHOLDERS:

2.4
Million

MARKETS:



P&C / Non-Life

EIS SUITE COMPONENTS SELECTED:



EIS Platform™



PolicyCore®



BillingCore®



ClaimCore®



CustomerCore™

YEAR FOUNDED:

2000

HEADQUARTERS:

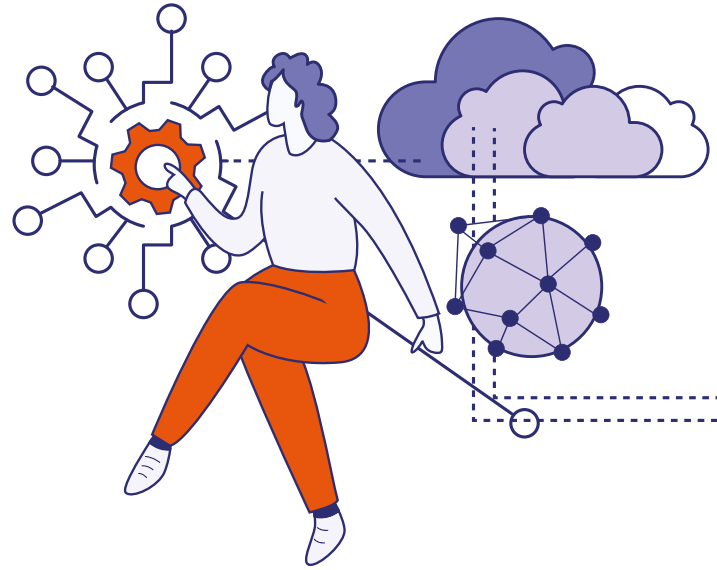
UK

PARTNERS:



Project

esure's transformation program will result in a world-class digital ecosystem, leveraging cutting edge processes and technology. This includes the delivery of a new core and digital technology platform from EIS which fits into the insurer's evolving architecture—cloud-enabled, open, and compatible with microservices and API stacks. Once implemented, the architecture will be the foundation of esure's digitalization process. The EIS Suite is designed to maintain agility and support policyholders' evolving needs. It is a highly configurable, rules-based platform for underwriting and new product innovation, that enables a seamless customer experience from end-to-end, from the buyer journey through to claims, while managing cost efficiencies for ongoing maintenance and support.



We're on a mission to transform our business into a world-class digital insurer, and to disrupt the insurance industry as we know it by always being on the customer's side. The flexible EIS platform will help us leapfrog the competition by providing a tech enabled customer experience, tailored propositions and attractive pricing. Our strategic partnership with EIS is a hugely exciting and a significant milestone on our digital transformation journey. We are excited to move ahead with our bold plans.”

David McMillan
CEO at esure



Want to see what EIS coretech can do for you?

The opportunities are (quite literally) endless, and we'd love to help you put numbers to your possibilities.

[BOOK A CALL](#)



eisgroup.com | [@eisgroupLtd](https://twitter.com/eisgroupLtd)

©2024 EIS Group, Ltd. All rights reserved. EIS and the EIS logo are trademarks or registered trademarks of EIS in the United States and/or other countries.